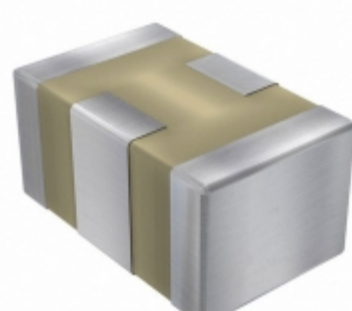


0805J1000103MXTE03



Part Number: 0805J1000103MXTE03
Manufacturer: Knowles Syfer
Description: CAP FEEDTHRU 0.01UF 100V 0805
Data sheet: [E03 Type](#)

RoHS Status: Lead free / RoHS Compliant
Ship From: Hong Kong
Shipment Way: DHL/Fedex/TNT/UPS/EMS

Images are for reference only.
 See Product Specifications for product details.
 Buy 0805J1000103MXTE03 with confidence from
 Component-World.HK, 1 Year Warranty

[Request For Quotation](#)

PRODUCT PARAMETER

Part Number	0805J1000103MXTE03	Manufacturer	Knowles Syfer
Description	CAP FEEDTHRU 0.01UF 100V 0805	Lead Free Status / RoHS Status	Lead free / RoHS Compliant
Quantity Available	69468 pcs	Data sheet	E03 Type
Category	Capacitors	Voltage - Rated	100V
Tolerance	±20%	Thickness (Max)	0.045" (1.15mm)
Temperature Coefficient	X7R	Size / Dimension	0.079" L x 0.049" W (2.00mm x 1.25mm)
Series	-	Ratings	-
Packaging	Original-Reel®	Package / Case	0805 (2012 Metric)
Other Names	1608-1005-3 1608-1005-3-ND 1608-1005-6	Operating Temperature	-55°C ~ 125°C
Mounting Type	Surface Mount, MLCC	Moisture Sensitivity Level (MSL)	1 (Unlimited)
Manufacturer Standard Lead Time	8 Weeks	Lead Style	-
Lead Spacing	-	Lead Free Status / RoHS Status	Lead free / RoHS Compliant
Height - Seated (Max)	-	Features	Low ESL (X2Y)
Detailed Description	10000pF ±20% 100V Ceramic Capacitor X7R 0805 (2012 Metric)	Capacitance	10000pF
Applications	Bypass, Decoupling		

Component-World.com is a Reliable Stocking Distributor of Electronic Components. We specialize in all Knowles Syfer series electronic components. We have 69468 pieces of Knowles Syfer 0805J1000103MXTE03 in stock available now. Request a quote from electronics components distributor at Component-World.com, our sales team will contact you within 24 hours.

RFQ Email: info@Components-World.com

RELATED PRODUCTS

	Part#: 0805J1000104KXT Description: CAP CER 0.1UF 100V X7R 0805	Manufacturers: Knowles Syfer	RFQ
	Part#: 0805J1000103KXT Description: CAP CER 10000PF 100V X7R 0805	Manufacturers: Knowles Syfer	RFQ
	Part#: 0805J1000104MXT Description: CAP CER 0.1UF 100V X7R 0805	Manufacturers: Knowles Syfer	RFQ
	Part#: 0805J1000104KXR Description: CAP CER 0.1UF 100V X7R 0805	Manufacturers: Knowles Syfer	RFQ
	Part#: 0805J1000110KQT Description: CAP CER 11PF 100V C0G/NP0 0805	Manufacturers: Knowles Syfer	RFQ
	Part#: 0805J1000103KDT Description: CAP CER 10000PF 100V X7R 0805	Manufacturers: Knowles Syfer	RFQ
	Part#: 0805J1000103MXT Description: CAP CER 10000PF 100V X7R 0805	Manufacturers: Knowles Syfer	RFQ
	Part#: 0805J1000103KDR Description: CAP CER 10000PF 100V X7R 0805	Manufacturers: Knowles Syfer	RFQ
	Part#: 0805J1000104JXR Description: CAP CER 0.10UF 100V X7R 0805	Manufacturers: Knowles Syfer	RFQ
	Part#: 0805J1000103MDT Description: CAP CER 10000PF 100V X7R 0805	Manufacturers: Knowles Syfer	RFQ
	Part#: 0805J1000103MDR Description: CAP CER 10000PF 100V X7R 0805	Manufacturers: Knowles Syfer	RFQ
	Part#: 0805J1000104JXT Description: CAP CER 0.10UF 100V X7R 0805	Manufacturers: Knowles Syfer	RFQ
	Part#: 0805J1000110JQT Description: CAP CER 11PF 100V C0G/NP0 0805	Manufacturers: Knowles Syfer	RFQ
	Part#: 0805J1000110GQT Description: CAP CER 11PF 100V C0G/NP0 0805	Manufacturers: Knowles Syfer	RFQ
	Part#: 0805J1000104MXR Description: CAP CER 0.1UF 100V X7R 0805	Manufacturers: Knowles Syfer	RFQ
	Part#: 0805J1000103MXR Description: CAP CER 10000PF 100V X7R 0805	Manufacturers: Knowles Syfer	RFQ
	Part#: 0805J1000103MXRE03 Description: CAP CER 10000PF 100V X7R 0805	Manufacturers: Knowles Syfer	RFQ
	Part#: 0805J1000103MXTE01 Description: CAP CER	Manufacturers: Knowles Syfer	RFQ
	Part#: 0805J1000103KXR Description: CAP CER 10000PF 100V X7R 0805	Manufacturers: Knowles Syfer	RFQ
	Part#: 0805J1000110FQT Description: CAP CER 11PF 100V C0G/NP0 0805	Manufacturers: Knowles Syfer	RFQ

Related keywords for 0805J1000103MXTE03

Knowles Syfer 0805J1000103MXTE03	0805J1000103MXTE03 distributor	0805J1000103MXTE03 supplier	0805J1000103MXTE03 price
0805J1000103MXTE03 download datasheet	0805J1000103MXTE03 datasheet	0805J1000103MXTE03 stock	buy 0805J1000103MXTE03
Knowles Syfer 0805J1000103MXTE03	Syfer 0805J1000103MXTE03		